

GILCREASE EXPRESSWAY PROJECT





**Driving Forward: Investing in Oklahoma's Future
Gilcrease Expressway Update**

Agenda – Working Group Meeting

Meeting Date / Time:

Wednesday, December 1, 2020 – 1:00 pm to 2:00 pm

Meeting Location:

Saint Francis Conference Room – Lobby Level – Williams Tower I, Downtown Tulsa

The purpose of this meeting is to inform and update the Working Group of the accomplishments and progress made since the last meeting and to discuss any necessary coordination or other needs of the project.

- 1. Introduction** – Gene Wyckoff, Poe & Associates
- 2. Welcome** – Rich Brierre, INCOG
- 3. Project Overview** – Joe Echelle, OTA
- 4. Financing Plan Update** – Wendy Smith, OTA
- 5. Project Progress Update** – TJ Dill, OTA / Gary Evans, EST / Joe Echelle, OTA
- 6. Open for Questions**
- 7. Closing Comments**
- 8. Adjourn**



Program Manager:

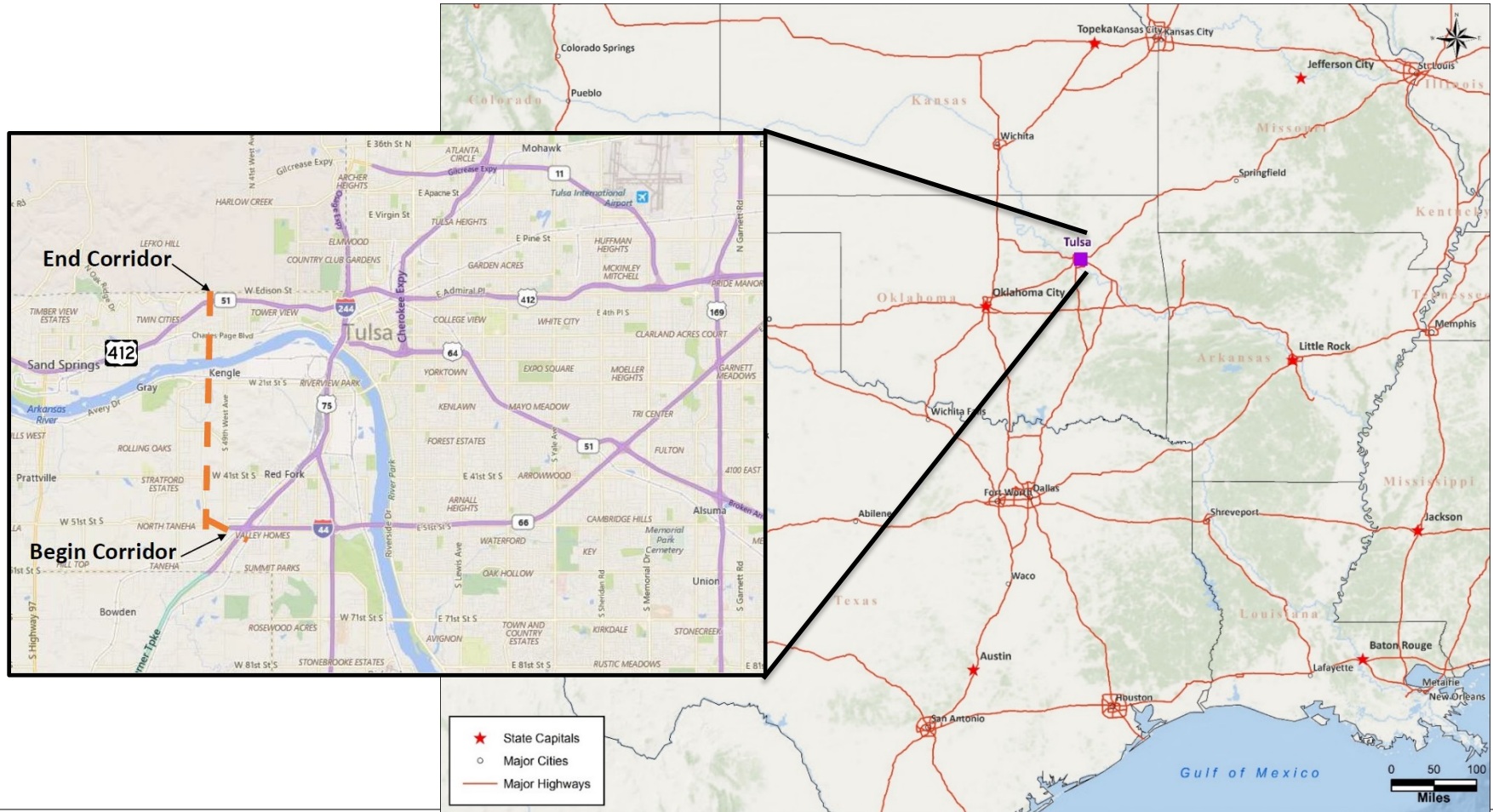


Construction Manager:



Gilcrease Expressway Project Location

- The Project is a planned extension of the existing expressway and transportation system in the Tulsa region and will complete a segment of the network between I-44 and US-412
- The Project is located in the I-44 corridor, a major east-west freight route and is close to the I-35 corridor connecting Dallas, Houston and the Gulf of Mexico



Purpose and Benefits of the Gilcrease Expressway

- Purpose
 - Completes west “beltway”
 - Lack of highways and river crossings limit mobility
 - Insufficient multimodal access to employment centers

- Benefits
 - Better access to destinations in the immediate vicinity
 - Improves public safety access for the region
 - Provides transportation choices for improved access
 - Promotes economic opportunity
 - Reduces load on inner dispersal loop
 - Utilizes resources efficiently (direct routes, “beltway”)

Project Description

- Approximately 5 mile, fully functional four-lane divided tolled highway
- Design features include:

Four interchanges

- W 51st St
- W 41st St
- W 21st St
- US-412

Bridges

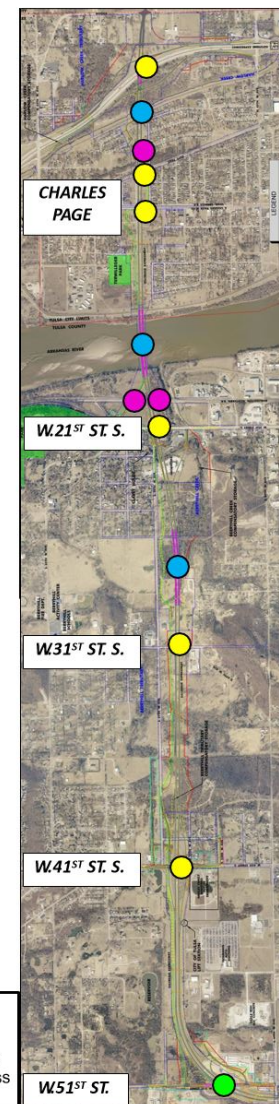
- 22 Bridges
- 7 Bridge-class RCBs

Four interchanges



- 12 – Street Overpass
- 1 – Street Underpass
- 5 – Railroad Overpass
- 6 – Waterway Overpass

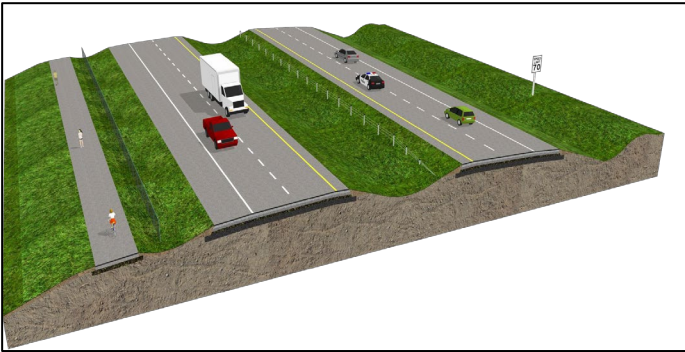
22 Bridges



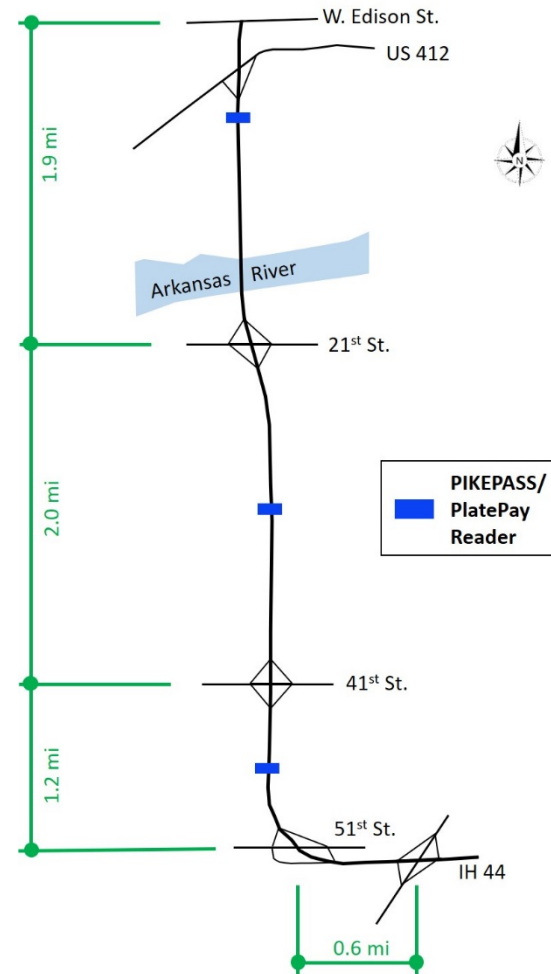
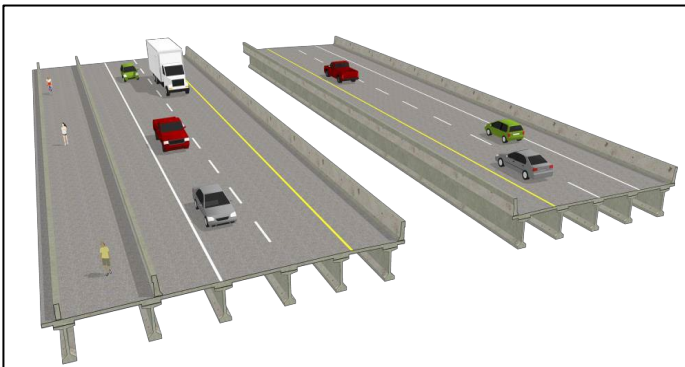
Design Features

- Four lane divided toll road, design speed 70 mph
 - 22 bridges including two bridges (one in each direction) over the Arkansas River
 - Parallel 10ft wide multi-use trail
- All electronic tolling with 3 gantries accommodating PIKEPASS and PlatePay technology

Typical Section, Gilcrease Expressway West



Typical Section, Arkansas River Bridge



Financial Status

Key Milestones To Date

04/19/10	Gilcrease Expressway added to authorized Authority turnpikes by State Legislature
3/28/17	Authority adopts a resolution to complete the Project and accept right-of-way from City of Tulsa
5/30/18	ODOT GARVEEs issued
7/23/19	Approval of Project Company AECOM/Duit
10/23/19	Authority submitted TIFIA Application
1/15/20	Authority and Project Company executed Project Agreement
1/30/20	Project Company closed on \$125M Private Activity Bonds
5/8/20	Authority received approval of \$120M TIFIA Loan

Financial Commitments to the Project

- City of Tulsa
 - Purchased \$17.2 million in ROW which will be conveyed to the Authority
 - \$4.9 million in preliminary engineering costs (costs already incurred)
- Oklahoma Department of Transportation
 - Issued GARVEE bonds with approximately \$71 million of proceeds available for Project costs
 - ODOT and the Authority have entered into an MOU which provides a process by which GARVEE proceeds are advanced to the Authority for Project costs
 - Expended all GARVEE proceeds in September 2020
- Indian Nations Council of Governments
 - Committed to transfer \$6 million annually to pay the debt service on GARVEEs issued by ODOT through their 15 years maturity
- Gilcrease Developers
 - \$125 million Private Activity Bonds to be used for construction progress payments
- The Authority
 - The Authority's contributions to the Project are limited to Public Funds and legally available moneys on deposit in the System General Fund
 - The Authority has committed \$138.5 million of System General Fund moneys during construction to fully fund Project development and construction costs

TIFIA Loan

- On May 8, 2020 the Authority closed on a TIFIA loan up to \$120,116,133
- Rated Baa3 by Moody's and BBB- by S&P
- **Interest rate of 1.35%**
- The loan will be a single disbursement drawn upon achievement of Substantial Completion
- TIFIA proceeds to be used for partial repayment of Project Company's \$125 million PABs

Project Progress Update

Pre-Construction

- **Major Environmental Approvals – COMPLETE**
 - 2000 – Initial Environmental Assessment (EA) approved by FHWA
 - 2005 & 2014 – Reevaluations of the EA were completed
 - 2019 – Additional reevaluation of the EA & Section 404 permit
- **Right-of-Way Acquisition – COMPLETE**
 - Significant portion of ROW previously acquired by the City of Tulsa
 - OTA Acquired remaining parcels
 - Agreements in progress to transfer ROW upon completion of construction
- **Utility Relocation – COMPLETE**
 - Coordination with 14 different utilities
 - 78 total locations – Started construction prior to completion
 - City of Tulsa water & sewer relocation ongoing within roadway contract
 - Unexpected oil wells, water tanks, and underground debris during construction

Construction – LOOK BACK

- Work started on January 30th, 2020
- 3rd party challenges during the initial ground disturbing activities
 - Existing utility relocations were ongoing
 - Abandoned oil/water wells were encountered
 - Buried household debris was uncovered
 - Archaeological Monitoring / Discoveries
- Initial construction focused on:
 - Bridge Foundations/substructures (22 span bridges)
 - Mass haul for embankments (3.4 million CY)
 - Drainage Structures
 - Water/Sewer relocations

Construction – RIGHT NOW

- Current Construction Focus:
 - Bridge Superstructures
 - Concrete Paving
- Today is day 672 of 865 (78% of time elapsed)
- Pace of construction: \$8 to \$10 million/month
- Earnings to date: ~\$206 million of the \$261.1 million contract. (79% of the contract)

West 51st Street – November 2020



West 51st Street - November 2021



West 41st Street – November 2020



West 41st Street – November 2021



Berryhill Creek Bridge – November 2020



Berryhill Creek Bridge – November 2021



West 21st Street – November 2020



West 21st Street – November 2021



BNSF Railroad Bridge – November 2020



BNSF Railroad Bridge – November 2021



Arkansas River Bridge – November 2020



Arkansas River Bridge – November 2021



Arkansas River Bridge – November 2020



Arkansas River Bridge – November 2021



Arkansas River Bridge – November 2020



Arkansas River Bridge – November 2021



Charles Page Blvd & SS RR Bridge – November 2020



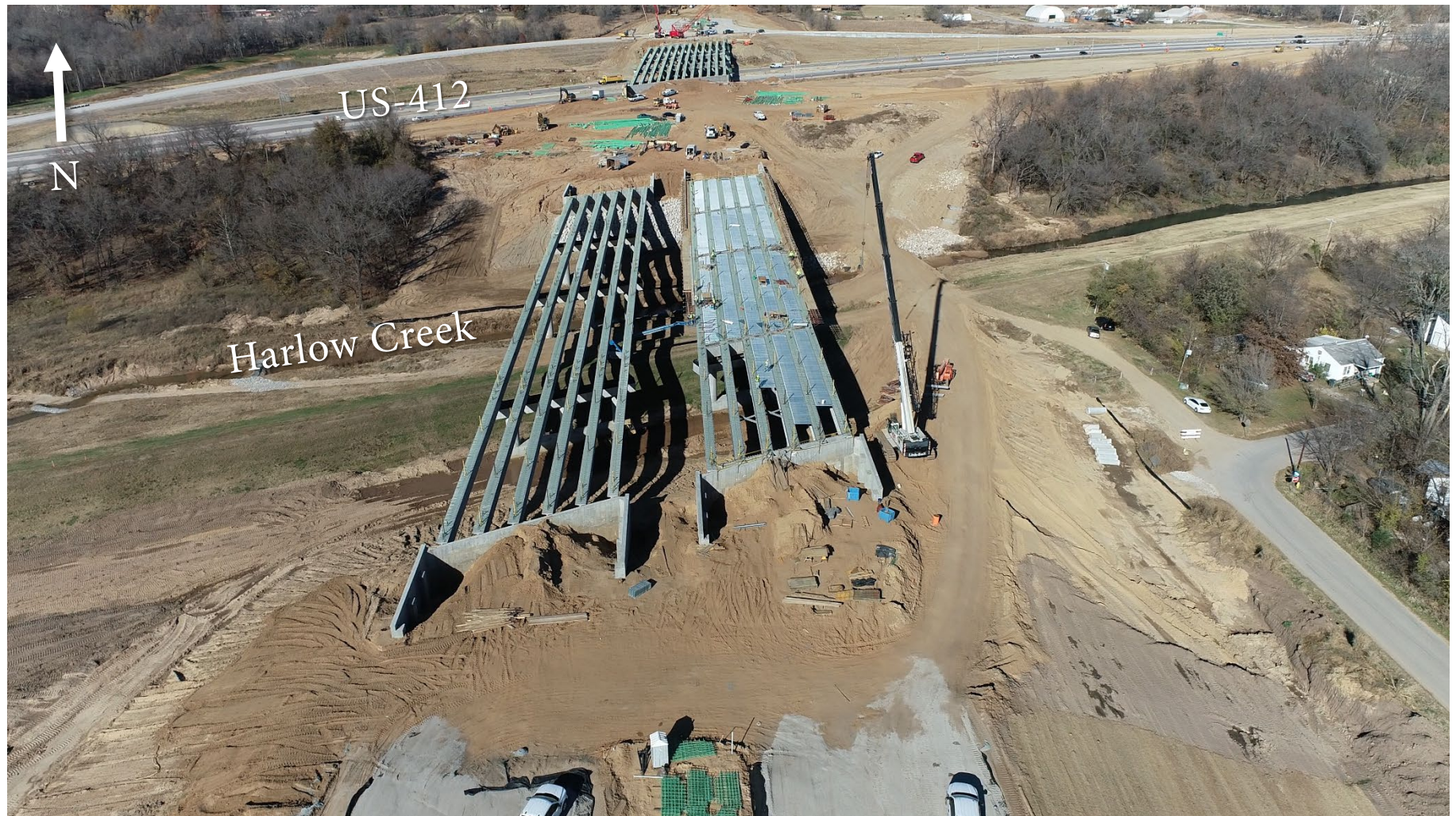
Charles Page Blvd & SS RR Bridge – November 2021



Harlow Creek & US-412 – November 2020



Harlow Creek & US-412 – November 2021



Construction – 6 Month Look AHEAD

- Remaining Items to Complete:
 - Bridge Superstructures
 - Concrete Paving
 - Tolling
 - Traffic Signals and Lighting
 - Signing and Striping

- Upcoming Local Road Closures
 - 41st Street East of Gilcrease Road
 - 120 Days starting Dec 13th
 - 57th W Ave North of 41st
 - 45 Days starting early 2022

Information

- Road Closure Updates:
 - www.DrivingForwardOK.com/Gilcrease-expressway
 - OTA Facebook Page
 - @OKTurnpike on Twitter
 - Tulsa County Facebook Page
 - @TulsaCounty on Twitter
- Copy of This Presentation:
 - Slides will be posted to Gilcrease website
 - www.DrivingForwardOK.com/gilcrease-expressway
- Media Inquiries:

Jack Damrill
Director of Communications & Facilities
Oklahoma Turnpike Authority
jdamrill@pikepass.com

GILCREASE EXPRESSWAY PROJECT

